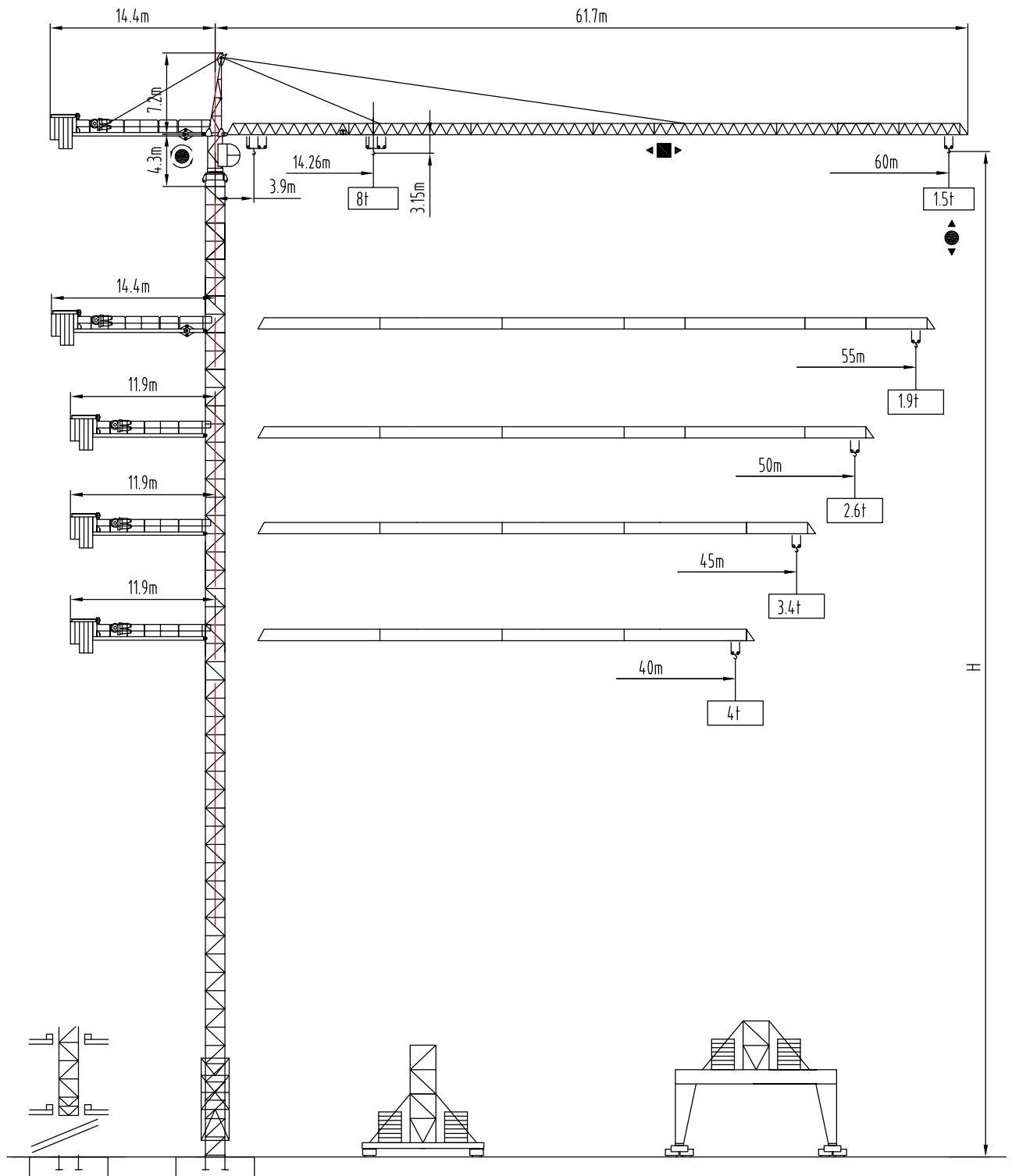




三洋重工  
SANYO HEAVY INDUSTRY GROUP

# TOWER CRANE QTZ115



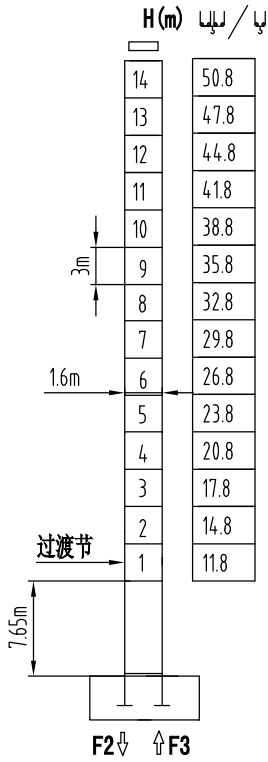


塔身截面 Mast □ 2mx2m

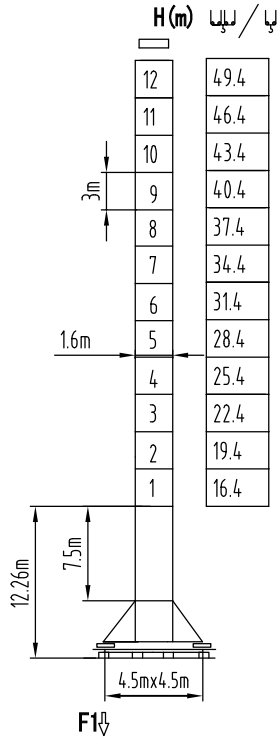
▲▲▲ 40-60m

PA452

SA452



F2	• 110t	▪ 172t
F3	• 65t	▪ 141t
📦	47.6t	



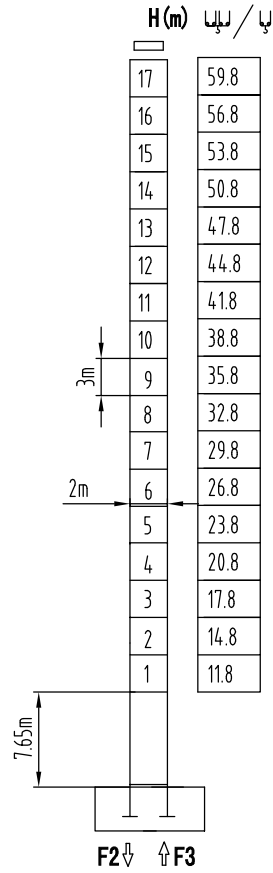
F1	• 70t	▪ 89t
📦	50t	

塔身截面 Mast □ 2mx2m

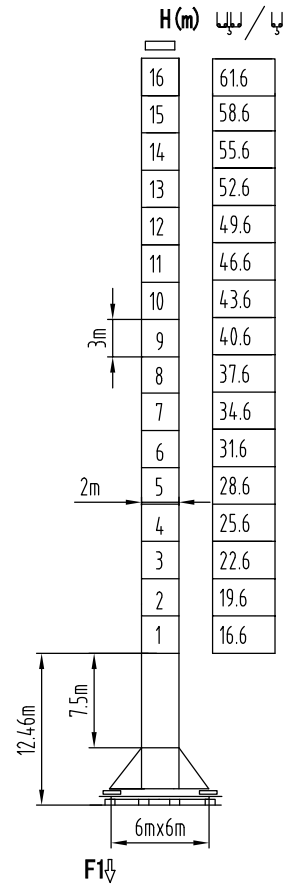
▲▲▲ 40-60m

PA664

VA650



F2	• 100t	▪ 199t
F3	• 58t	▪ 161t
📦	60t	

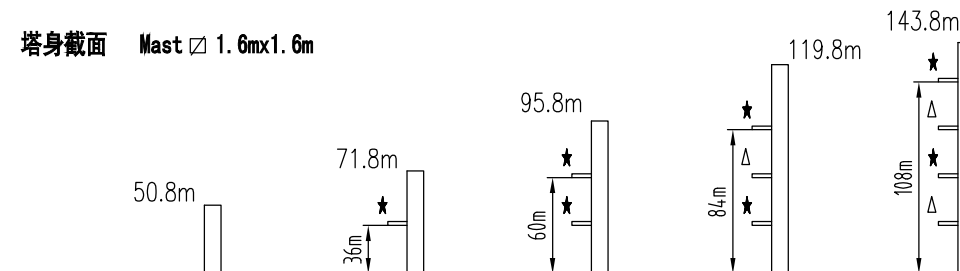


F1	• 86t	▪ 115t
📦	71t	

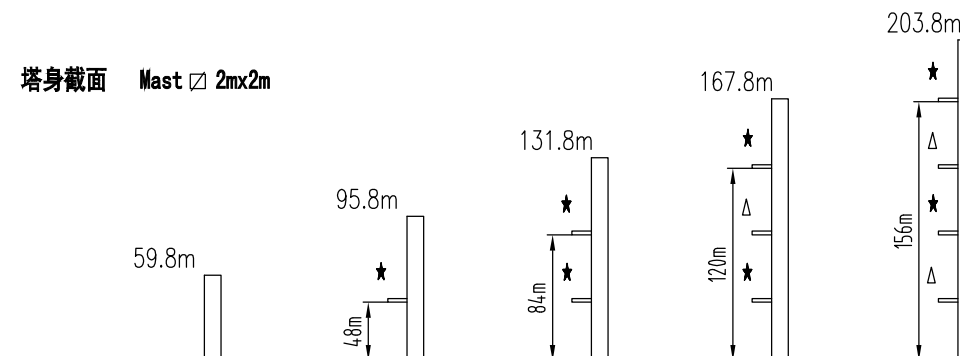
固定式附着高度 Anchoring height of sataionary crane

★ 紧固附着框 Anchorages tightened    △ 放松附着框 Anchorages released    如需达到更高的高度, 请与我们联系。For greater heights, consult us.

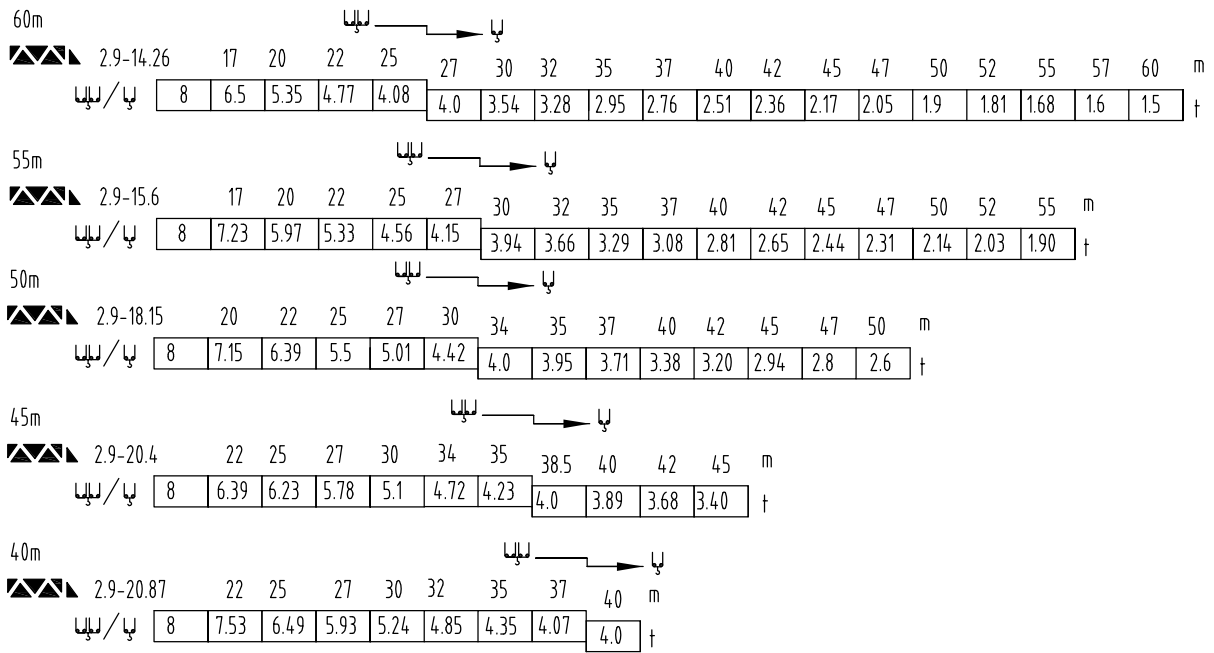
塔身截面 Mast □ 1.6mx1.6m



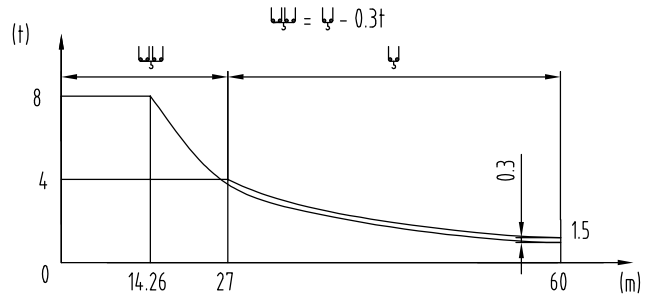
塔身截面 Mast □ 2mx2m



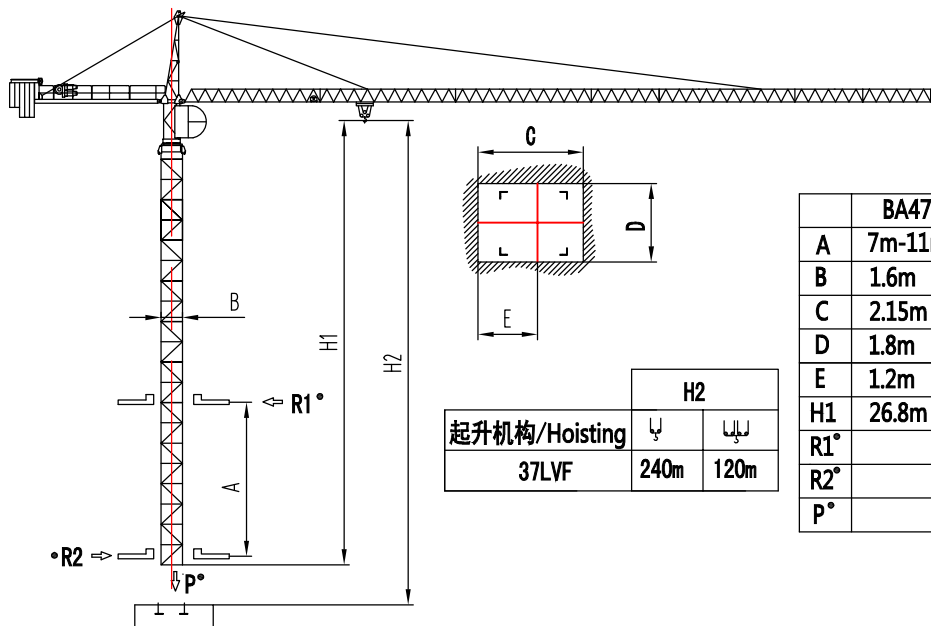
### 载荷特性 Load diagrams



标准小车可使用 2/4 倍率绳 standard trolley 2/4 fall.  
 使用四倍率时, 应从二倍率的载荷中减去 0.3 吨  
 When using 4倍率 subtract 0.25t from the loads



### 内爬塔机 Climbing crane

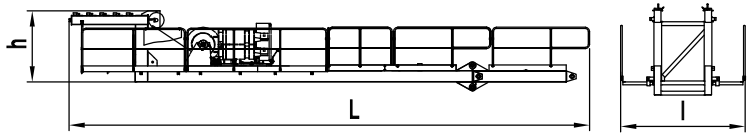
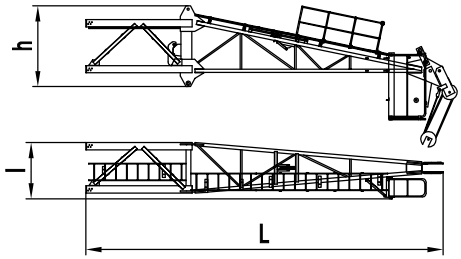
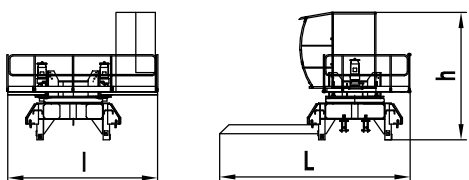
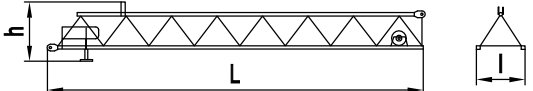
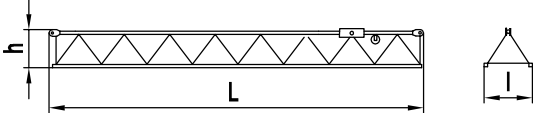
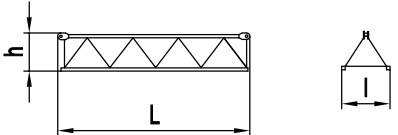
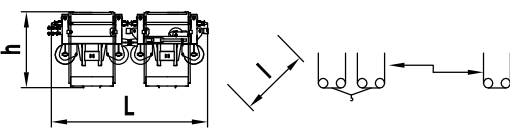
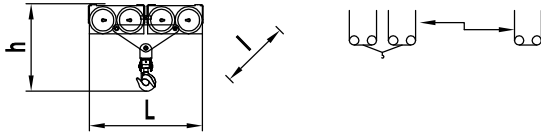
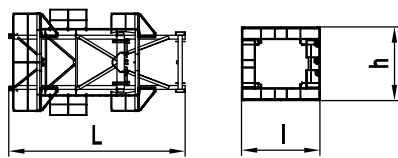


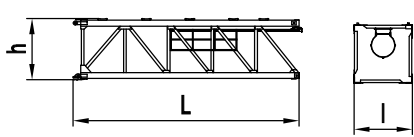
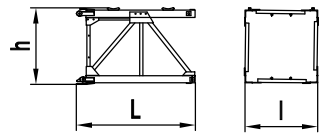
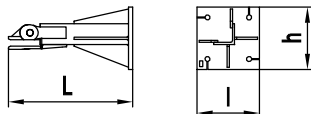
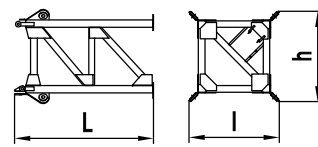
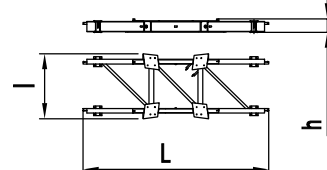
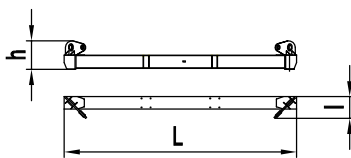
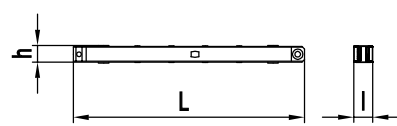
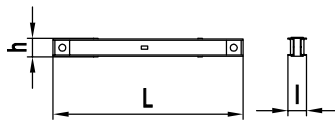
起升机构/Hoisting	H2	
	240m	120m

	BA476	BA479	BA675
A	7m-11m	12m-14m	16m-21m
B	1.6m	1.6m	2m
C	2.15m	2.31m	2.58m
D	1.8m	1.77m	2.17m
E	1.2m	1.36m	1.495m
H1	26.8m	43.3m	53.6m
R1°			
R2°			
P°			

● 工作状态无系数

外形尺寸重量表

塔机回转部分		L(m)	l(m)	h(m)	Kg
平衡臂		13.90	2.61	1.90	5445
塔头		9.45	1.32	2.08	4080
回转机构	 □1.6m □2m	6.08	3.78	3.46	4150
		6.18	3.78	3.46	3932
起重臂节	 1	10.15	1.19	1.26	1576
起重臂节	 2 3 5	10.12	1.19	0.96	1112
		10.23	1.19	0.96	946
		10.25	1.19	0.95	825
起重臂节	 4 6 7 8	5.23	1.19	0.95	470
		5.25	1.19	0.95	430
		5.25	1.19	0.95	668
		5.25	1.19	0.95	668
变幅小车		2.41	1.36	1.12	425
吊钩滑轮组		1.74	0.195	1.12	257
顶升装置		L(m)	l(m)	h(m)	Kg
顶升套架	 □1.6m □2m	6.785	3.436	3.436	3495
		7.26	4.3	4.05	4288

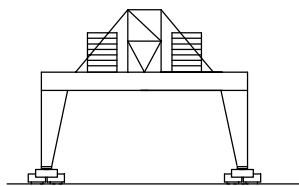
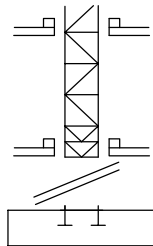
塔身部分		L(m)	l(m)	h(m)	Kg	
基础节		∠1.6m	7.76	1.70	1.76	2625
		∠2m	7.76	2.0	2.1	3790
标准节		∠1.6m	3.28	1.70	1.76	1188
		∠2m	3.28	2.0	2.1	1577
底部						
固定支脚		∠1.6m	1.195	0.49	0.49	181.5
		∠2m	1.2	0.6	0.6	295
底架塔节		∠1.6m	3.69	2.00	2.00	2240
		∠2m	3.80	2.50	2.50	3780
底架纵梁		∠1.6m	6.32	2.08	0.54	1200
		∠2m	7.14	2.484	0.54	2140
底架横梁		∠1.6m	4.88	0.467	0.705	1110
		∠2m	6.38	0.58	0.808	1500
底架撑杆		∠1.6m	3.86	0.27	0.28	350
		∠2m	4.45	0.34	0.37	620
底架水平杆		∠1.6m	1.66	0.17	0.12	65
		∠2m	2.44	0.22	0.24	205

机构特性 Mechanisms specification														Kw	
起升 Hoisting		37LVF	m/min	0-5	0-20	0-40	0-61	0-82	0-2.5	0-10	0-20	0-30.5	0-41	490	37
			t	4	4	4	2	1	8	8	8	4	2		
变幅 Trolleying		4TVF	m/min	0-55										4	
回转 Slewing		5.5SVF	r/min	0-0.7										5.5x2	
		95SVT												95Nm $\times$ 2	
行走 Travelling		4TRVF	m/min	0-12										4x4	
电源		Power Supply		380V 50Hz / 440V 60Hz											
KVA 供电容量		Necessary Electric Power		75KVA											

平衡臂配重  
Counter-jib ballast

		(t)
60m	14.4m	16.2
55m	14.4m	15.4
50m	11.9m	18.03
45m	11.9m	17.42
40m	11.9m	16.2

可变换的其它安装方式  
Mounting possibilities



同我们协商  
Consult us

F 反力  
Reactions

- 工作状态 In service
- 非工作状态 Out of service

自重  
Self-load

不带载箱及配重, 最大臂长及标准高度时的自重。

Without load and counter-weight with longest jib and standard height

起升机构

图号/代号

37LVF

37YFL20久和整体外购