

# Electronic Meter

## User Manual

Manuel d'utilisation

Manual de usuario

Gebrauchsanleitung

Manuale dell'utente

(pH) FT11

(TDS) FT34 FT36

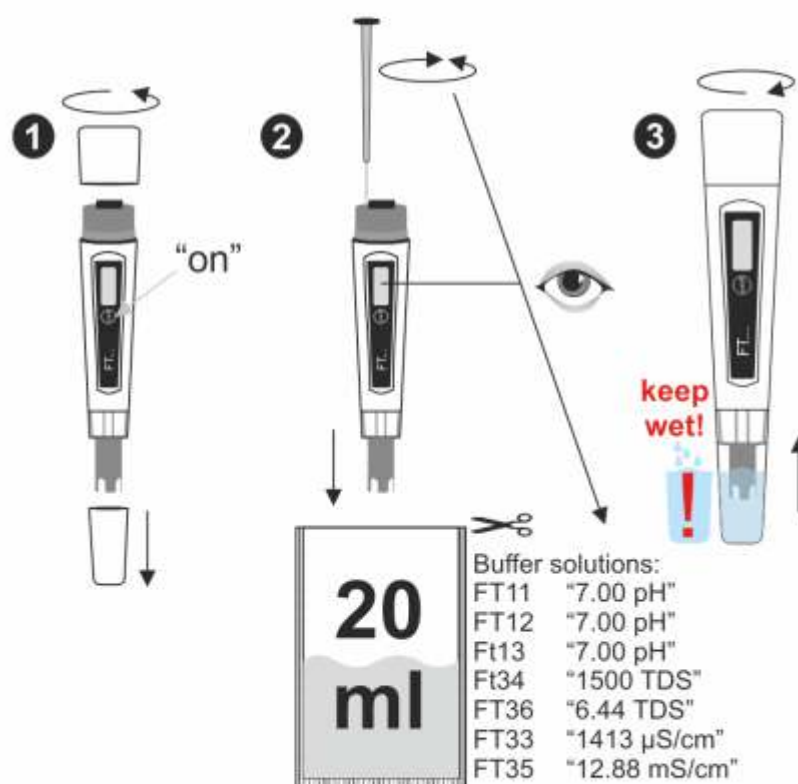
(EC) FT33 FT35



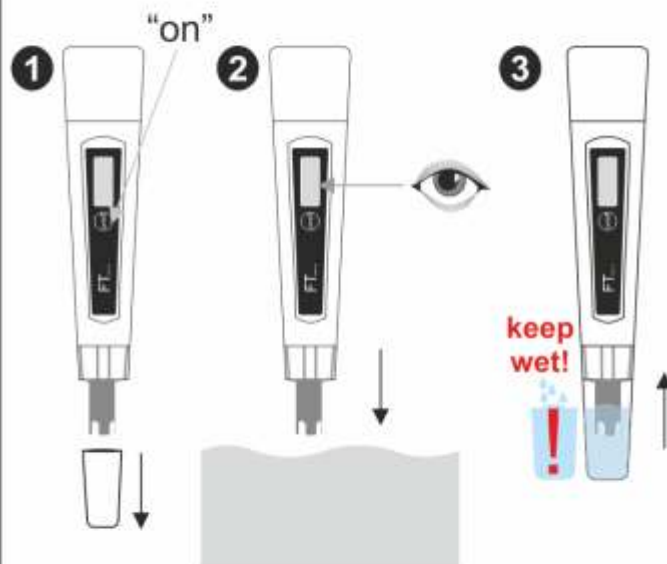
Inverkehrbringer / Distributed by: Water-i.d. GmbH • Daimlerstr. 20 • D-76344 Eggenstein • www.water-id.com

	FT11	FT34	FT36	FT33	FT35
<b>Range</b>	0.0-14.0 pH	0-1999 ppm 0.0-1.999 ppt)	(0-10000 ppm) 0.00-10.00 ppt	0-1999 $\mu$ S/cm (0-1.999 mS/cm)	(0-19990 $\mu$ S/cm) 0.00 - 19.99 mS/cm
<b>Resolution</b>	0.1 pH	1 ppm	0.01 ppt	1 $\mu$ S/cm	0.01 mS/cm
<b>Accuracy</b>	+/- 0.1 pH	+/- 2% FS	+/- 2% FS	+/- 2% FS	+/- 2% FS
<b>Calibration</b>	manual	manual	manual	manual	manual
<b>Temp. Comp.</b>	---	automatic 0 - 50° C $\beta$ = 2%/°C	automatic 0 - 50° C $\beta$ = 2%/°C	automatic 0 - 50° C $\beta$ = 2%/°C	automatic 0 - 50° C $\beta$ = 2%/°C
<b>Battery Type</b>	3 x 1.5 V	4 x 1.5 V	4 x 1.5 V	4 x 1.5 V	4 x 1.5 V
<b>Batt. Life</b>	~ 1000 h	~250 h	~250 h	~250 h	~250 h
<b>Environment</b>	0 - 50° C RH 100%	0 - 50° C RH 100%	0 - 50° C RH 100%	0 - 50° C RH 100%	0 - 50° C RH 100%

## Calibration



## Use



## Battery

