

Wellington

Crown Jewel 4961

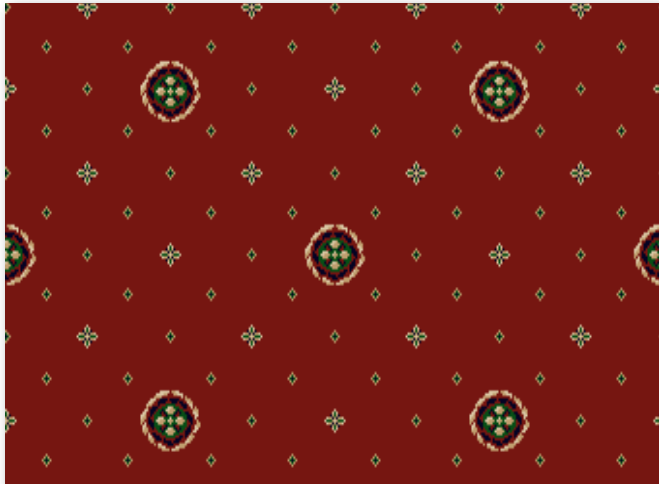
10

80

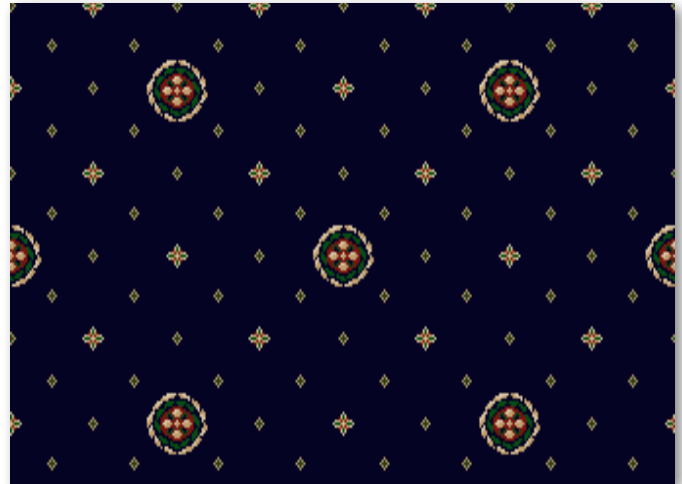
40

30

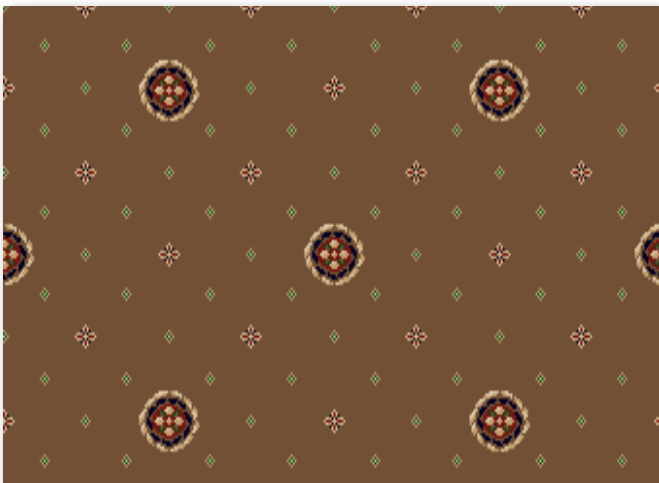




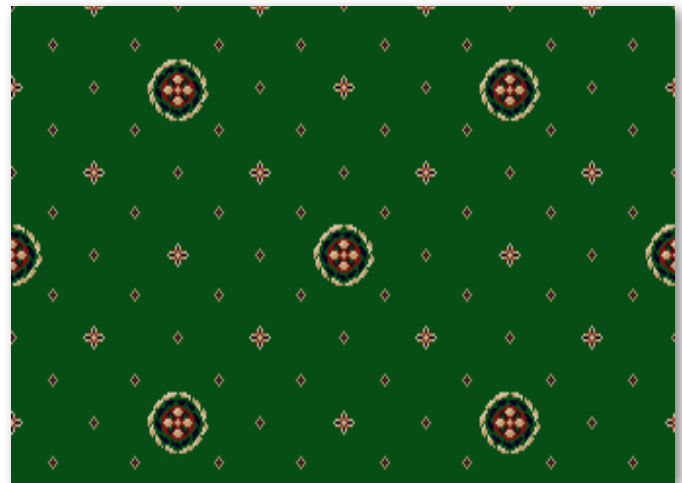
▲ Regel Red 10



▲ Midnight 30

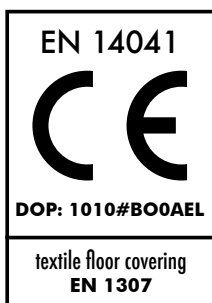


▲ Mocha 80



▲ Meadow 40

Manufacturing process	Traditionally Woven Wilton	Number of points	ca. 340.000/m²
Pile content	100% PP StainSafe®	Width	400 cm
Pile weight	ca. 1.320 gr/m²	Design Repeat	50 (W) x 50 (H) cm
Total weight	ca. 2.055 gr/m²	Light Fastness	5-6
Pile height	ca. 8 mm	Water resistance	4-5
Total height	ca. 10 mm	Characteristics	Heavy Domestic / Light contrast use
Shot density	50/10cm	Thermal resistance	0,13 m² K/W (Tog 1,3)
Warp rate	34/10 cm	Installation	Underlay and gripper rods BS5325



Onder voorbehoud van wijzigingen van de technische specificaties - Sous réserve de modifications techniques - Unter Vorbehalt von Änderungen der technischen Daten - All rights reserved to alter technical specifications. Kijk voor de uitgebreide garantievoorwaarden op www.stain-safe.com - Pour le détail des conditions de garantie, rendez-vous sur www.stain-safe.com - Detaillierte Garantiebedingungen finden Sie auf www.stain-safe.com - For detailed warranty conditions, see www.stain-safe.com

Balta Broadloom
 Wakkensteenweg 2, 8710 Sint-Baafs-Vijve • Belgium
 T +32 (0)56 62 22 11 • F +32 (0)56 62 23 55 • broadloom@baltagroup.com • www.baltagroup.com