



## PFA9165A0025005

Home Page | [Print](#)

Price: € 88,70

IP 65  

Ratio 1:25,96

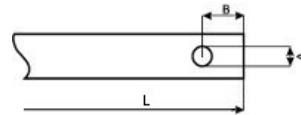
Cable clamp PRPS0062PE - CABLE CLAMP M16

Notes




Shaft

Code ALL1R00001

End side Front  
 Length (L) 35,00 mm  
 Flexible No  
 Standard diameter 8 mm  
 End type Radial hole  
 Dimension A 4,00 mm  
 Dimension B 7,00 mm



Cam Set Code: PRFC0004PEC

Cams	Switches
3 	PRSL7140PI PRSL0003XX
2 	PRSL7140PI PRSL0003XX
1 	PRSL7140PI PRSL0003XX

Note: cams numbering is bottom up

Anti condensation option Serial numbering No-drop wire 

This configuration has been saved in our records and will be valid 180 days from the date of creation. After that date it will be deleted.  
 The image is representative and does not match the actual product.

For more information on this product or to get a quote contact us

**Sede Operativa / Headquarter**

Via Garibaldi 29/31  
23885 Calco (LC) - Italy  
Tel. +39 039 99.11.011  
Fax +39 039 99.10.445  
E-mail [info@tenworld.com](mailto:info@tenworld.com)



**Sede Legale / Registered Office**

Via San Vigilio 2 - 23887 Olgiate Molgora (LC) - Italy  
Capitale sociale / Capital stock € 150.000  
R.E.A Lecco N. 136104 - M.I.C. 001225

*"Do you want receive TER news updates?"*

[Subscribe to our newsletter](#)

[Term of privacy](#)

© 2012 TER Tecno Elettrica Ravasi srl