



PFA9067A0075002

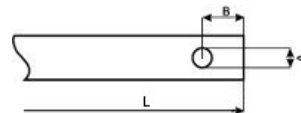
Home Page | [Print](#)

Price: € 105,52



IP 66/67/69K CE cULus EAC

Ratio	1:75
Cable clamp	PRPS0062PE - CABLE CLAMP M16
Notes	
Shaft	
	Code ALL1R00001
	End side Front
	Length (L) 35,00 mm
	Flexible No
	Standard diameter 8 mm
	End type Radial hole
	Dimension A 4,00 mm
	Dimension B 7,00 mm



Cam Set Code: PRFC0202PEC

	Cams	Switches
4		PRSL7140PI PRSL0003XX
3		PRSL7140PI PRSL0003XX
2		PRSL7140PI PRSL0003XX
1		PRSL7140PI PRSL0003XX

Note: cams numbering is bottom up

- Anti condensation option
- Serial numbering
- No-drop wire

This configuration has been saved in our records and will be valid 180 days from the date of creation. After that date it will be deleted. The image is representative and does not match the actual product.

For more information on this product or to get a quote contact us

TER Tecno Elettrica Ravasi srl

Sede Operativa / Headquarter

Via Garibaldi 29/31
23885 Calco (LC) - Italy
Tel. +39 039 99.11.011
Fax +39 039 99.10.445
E-mail info@terworld.com

Sede Legale / Registered Office

Via San Vigilio 2 - 23887 Olgiate Molgora (LC) - Italy
Capitale sociale / Capital stock € 150.000
R.E.A Lecco N. 136104 - M.I.C. 001225
Registro Imprese di Lecco / Business register in Lecco
C.F.P.IVA / Fiscal Code/VAT no. 00222410136
PEC tecnoelettricaravasi@pec.edslegal.it

"Do you want receive TER news updates?"

[Subscribe to our newsletter](#)

[Term of privacy](#)



© 2012 TER Tecno Elettrica Ravasi srl