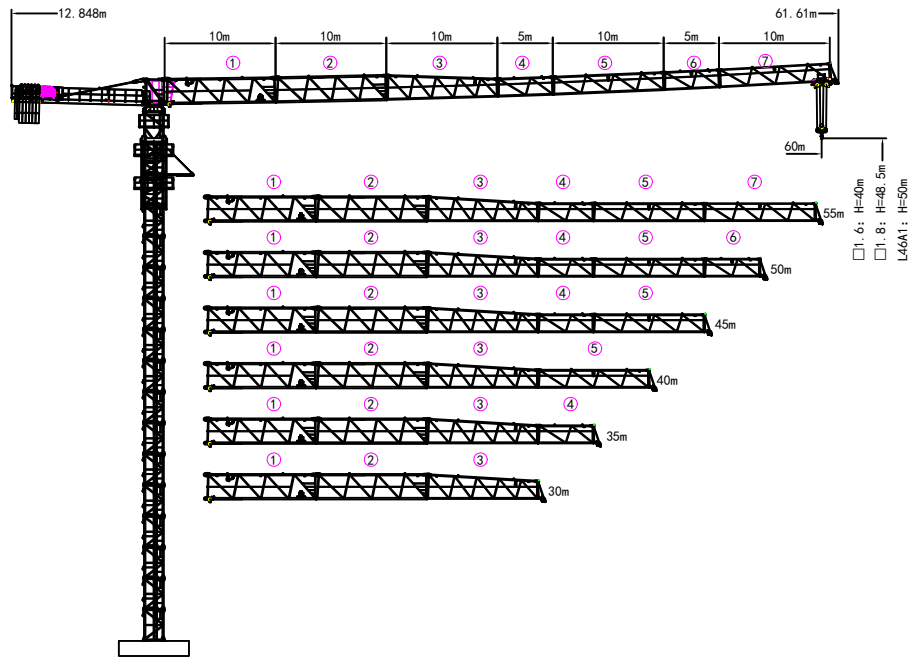
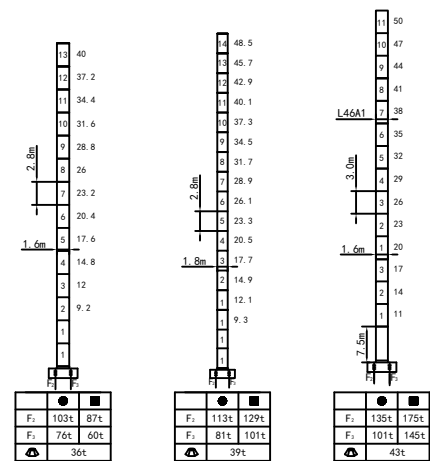


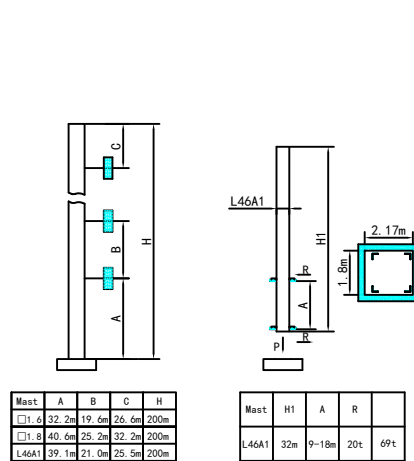
外形尺寸 Outline Dimensions



塔身截面 Masts



附着 Anchorages



附着道数: Number of tie colors=(H-A-C)/B*1

载荷特性表 Load Diagrams 10t

R _{max}	Fail	R _{Cmax}	C _{max} (t)	15	20	25	30	35	40	45	50	55	60
60m	□	12.0	10.0	7.85	5.70	4.41	3.55	2.94	2.48	2.12	1.83	1.60	1.40
	■	22.8	5.0	5.0	5.0	4.51	3.65	3.04	2.58	2.22	1.93	1.70	1.50
55m	□	13.0	10.0	8.57	6.24	4.85	3.92	3.25	2.75	2.36	2.05	1.80	
	■	24.8	5.0	5.0	5.0	4.95	4.02	3.35	2.85	2.46	2.15	1.90	
50m	□	13.5	10.0	8.93	6.53	5.08	4.12	3.44	2.92	2.52	2.20		
	■	25.8	5.0	5.0	5.0	5.0	4.22	3.54	3.02	2.62	2.30		
45m	□	14.5	10.0	9.63	7.03	5.47	4.43	3.69	3.13	2.70			
	■	27.6	5.0	5.0	5.0	5.0	4.53	3.79	3.23	2.80			
40m	□	14.8	10.0	9.83	7.14	5.52	4.45	3.68	3.10				
	■	27.7	5.0	5.0	5.0	5.0	4.55	3.78	3.20				
35m	□	15.0	10.0	10.0	7.33	5.73	4.66	3.90					
	■	28.7	5.0	5.0	5.0	5.0	4.76	4.00					
30m	□	15.0	10.0	10.0	7.35	5.76	4.70						
	■	28.9	5.0	5.0	5.0	5.0	4.80						

载荷特性表 Load Diagrams 8t

R _{max}	Fail	R _{Cmax}	C _{max} (t)	15.0	20	25	30	35	40	45	50	55	60
60m	□	15.4	8.0	8.0	5.95	4.59	3.68	3.03	2.54	2.16	1.86	1.61	1.40
	■	28.6	4.0	4.0	4.0	4.0	3.78	3.13	2.64	2.26	1.96	1.71	1.50
55m	□	16.5	8.0	8.0	6.83	5.23	4.01	3.32	2.80	2.39	2.07	1.80	
	■	30.7	4.0	4.0	4.0	4.0	4.0	3.42	2.90	2.49	2.17	1.90	
50m	□	17.5	8.0	8.0	6.88	5.32	4.28	3.54	2.98	2.55	2.20		
	■	32.3	4.0	4.0	4.0	4.0	4.0	3.64	3.08	2.65	2.30		
45m	□	18.5	8.0	8.0	7.24	5.60	4.51	3.74	3.15	2.70			
	■	35.1	4.0	4.0	4.0	4.0	4.0	3.84	3.25	2.80			
40m	□	18.7	8.0	8.0	7.38	5.67	4.53	3.74	3.15				
	■	35.1	4.0	4.0	4.0	4.0	4.0	3.84	3.25				
35m	□	19.0	8.0	8.0	7.55	5.85	4.71	3.90					
	■	35.0	4.0	4.0	4.0	4.0	4.0	4.0					
30m	□	18.5	8.0	8.0	7.55	5.85	4.71						
	■	30.0	4.0	4.0	4.0	4.0	4.0						

机构 Mechanisms 8/10t

名称	8t		10t		容绳量		电机功率
	m/min	t	m/min	t	m	kW	
起升 Hoisting	30LVF20	0-80	2.0	0-40	4.0	500	30
		0-40	4.0	0-20	8.0		
	45LVF25	0-80	2.5	0-40	5.0	500	45
		0-40	5.0	0-20	10.0		
变幅 Trolleying	8t	BP4033X	0-40 m/min				3.3
	10t	BP6055X	0-60 m/min				
回转 Slewing	2RVF4		0-0.6 rpm				4.0×2
电源 Power	380V (±10%) /50Hz			30LVF20: 41.3kW 45LVF25: 58.5kW			

平衡重 Counter weight

	60m	55m	50m	45m	40m	35m	30m
PHZ2600	12.848m	12.848m	12.848m	12.848m	12.848m	12.848m	12.848m
PHZ1300	18200kG	16900kG	16900kG	15600kG	14300kG	13000kG	11700kG
Counter weight	6	6	6	5	5	4	4
Ballast	2	1	1	2	1	2	1

● 工作状态支反力 in service Reaction ■ 非工作状态支反力 Out of service Reaction
 △ 不含平衡重及压重等附属立具重量 Total weight of free standing crane (exclude Counter weight & ballast)