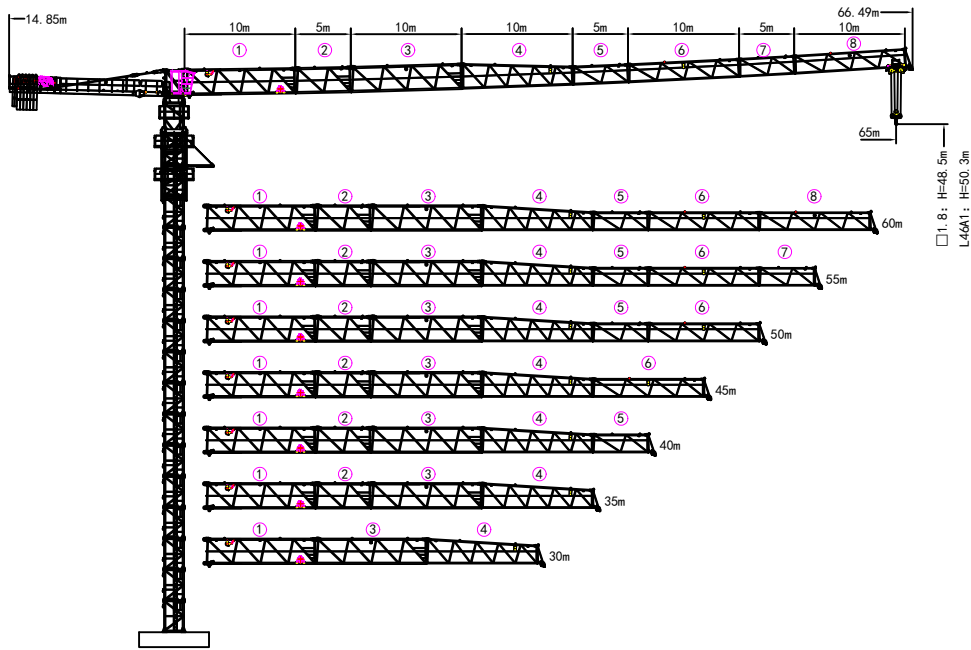
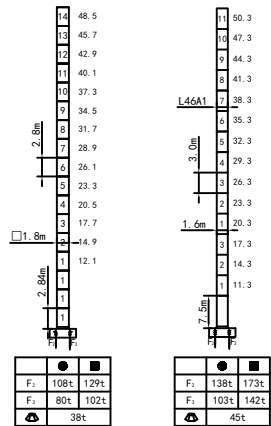


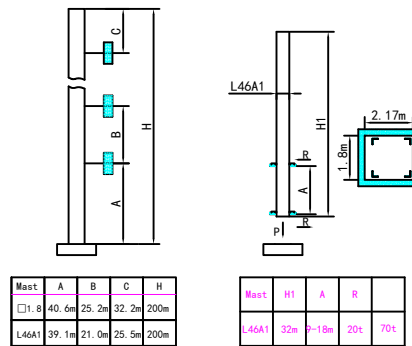
外形尺寸 Outline Dimensions



塔身截面 Masts



附着 Anchorages



● 工作状态支反力 in service Reaction ■ 非工作状态支反力 Out of service Reaction
 ⊙ 不含平衡重及压重塔机独立高度重量 Total weight of free standing crane (exclude Counter weight & ballast)

附着道数: Number of tie colars=(H-A-C)/B*1

载荷特性表 Load Diagrams 8/10t

R _{in}	Fall	RC _{max/10}	C _{max(t)}	20	25	30	35	40	45	50	55	60	65
65m	⬇	12.0	10.0	5.68	4.39	3.52	2.91	2.45	2.09	1.80	1.56	1.37	1.20
	⬇	22.7	5.0	5.0	4.49	3.62	3.01	2.55	2.19	1.90	1.66	1.47	1.30
60m	⬇	13.0	10.0	6.25	4.85	3.92	3.26	2.76	2.37	2.06	1.81	1.60	
	⬇	24.8	5.0	5.0	4.95	4.02	3.36	2.86	2.47	2.16	1.91	1.70	
55m	⬇	13.4	10.0	6.46	5.03	4.07	3.39	2.88	2.48	2.16	1.90		
	⬇	25.6	5.0	5.0	5.0	4.17	3.49	2.98	2.58	2.26	2.00		
50m	⬇	14.5	10.0	7.05	5.50	4.47	3.73	3.18	2.74	2.40			
	⬇	27.7	5.0	5.0	5.0	4.57	3.83	3.28	2.84	2.50			
45m	⬇	14.6	10.0	7.12	5.57	4.53	3.79	3.23	2.80				
	⬇	28.0	5.0	5.0	5.0	4.63	3.89	3.33	2.90				
40m	⬇	15.0	10.0	7.32	5.71	4.64	3.87	3.30					
	⬇	28.6	5.0	5.0	5.0	4.74	3.97	3.40					
35m	⬇	15.5	10.0	7.57	5.91	4.79	4.00						
	⬇	29.6	5.0	5.0	5.0	4.89	4.10						
30m	⬇	15.5	10.0	7.63	5.99	4.90							
	⬇	30.0	5.0	5.0	5.0	5.0							

机构 Mechanisms 8/10t

名称		⬇		⬆		容绳量	电机功率		
		m/min	t	m/min	t	m	kW		
起升 Hoisting	8t	30LVF20		0-80	2.0	0-40	4.0	500	30
				0-40	4.0	0-20	8.0		
	10t	45LVF25		0-80	2.5	0-40	5.0	500	45
				0-40	5.0	0-20	10.0		
变幅 Trolleying	BP6555X	0-65 m/min					5.5		
回转 Slewing	2RVF5.5	0-0.6 rpm					5.5×2		
电源 Power	380V (±10%) /50Hz			30LVF20: 46.5kW		45LVF25: 61.5kW			

平衡重 Counter weight

			PHZ2600	PHZ1000
65m	14.85m	17600kG	6	2
60m	14.85m	16600kG	6	1
55m	14.85m	15600kG	6	/
50m	14.85m	15000kG	5	2
45m	14.85m	13000kG	5	/
40m	14.85m	12400kG	4	2
35m	14.85m	11400kG	4	1
30m	14.85m	9800kG	3	2