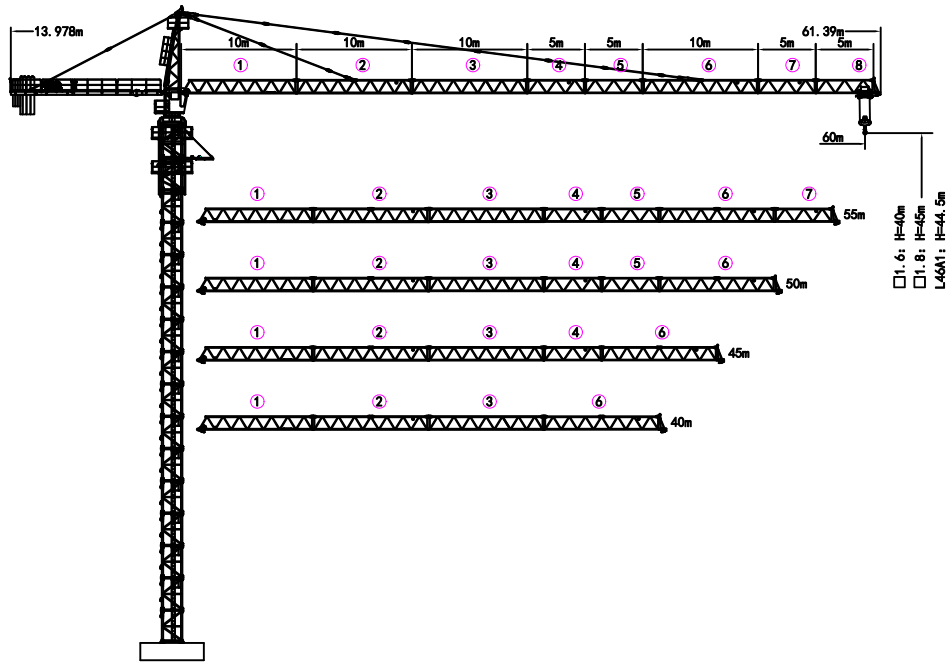
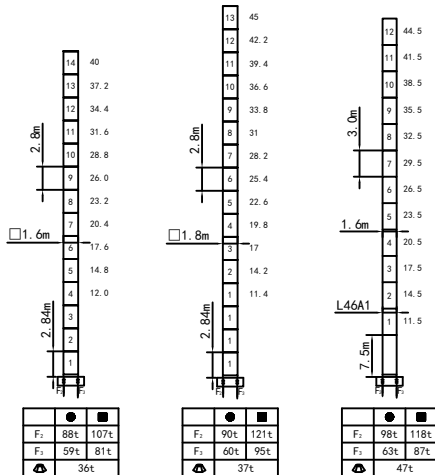


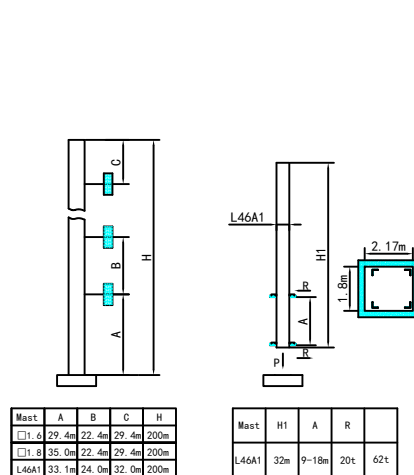
外形尺寸 Outline Dimensions



塔身截面 Masts



附着 Anchorages



● 工作状态支反力 in service Reaction ■ 非工作状态支反力 Out of service Reaction
 △ 不含平衡重及压重等附件的总重量 Total weight of free standing crane (exclude Counter weight & ballast)

附着道数: Number of tie colors=(H-A-C)/B+1

载荷特性表 Load Diagrams 8t

R(m)	Fall	R.C. _{max(m)}	C _{max(t)}	15	20	25	30	35	40	45	50	55	60
60m	U	14.0	8.0	7.45	5.31	4.06	3.24	2.66	2.22	1.89	1.62	1.40	1.22
	U	25.7	4.0	4.0	4.0	4.0	3.32	2.74	2.30	1.97	1.70	1.48	1.30
55m	U	14.8	8.0	7.88	5.65	4.33	3.46	2.84	2.39	2.03	1.75	1.52	
	U	27.1	4.0	4.0	4.0	4.0	3.54	2.92	2.47	2.11	1.83	1.60	
50m	U	15.2	8.0	8.0	5.82	4.48	3.58	2.94	2.47	2.11	1.82		
	U	27.8	4.0	4.0	4.0	4.0	3.66	3.02	2.55	2.19	1.90		
45m	U	15.2	8.0	8.0	5.82	4.48	3.58	2.94	2.47	2.11			
	U	27.8	4.0	4.0	4.0	4.0	3.66	3.02	2.55	2.19			
40m	U	15.2	8.0	8.0	5.82	4.48	3.58	2.94	2.47				
	U	27.8	4.0	4.0	4.0	4.0	3.66	3.02	2.55				

载荷特性表 Load Diagrams 6t

R(m)	Fall	R.C. _{max(m)}	C _{max(t)}	15	20	25	30	35	40	45	50	55	60
60m	U	17.8	6.0	6.0	5.25	4.02	3.21	2.63	2.22	1.89	1.62	1.41	1.23
	U	32.2	3.0	3.0	3.0	3.0	3.0	2.72	2.28	1.95	1.69	1.48	1.30
55m	U	18.8	6.0	6.0	5.59	4.30	3.44	2.83	2.38	2.04	1.76	1.53	
	U	34.0	3.0	3.0	3.0	3.0	3.0	2.89	2.45	2.10	1.83	1.60	
50m	U	19.3	6.0	6.0	5.78	4.45	3.56	3.01	2.48	2.12	1.83		
	U	35.1	3.0	3.0	3.0	3.0	3.0	3.0	2.55	2.19	1.90		
45m	U	19.3	6.0	6.0	5.78	4.45	3.56	3.01	2.48	2.12			
	U	35.1	3.0	3.0	3.0	3.0	3.0	3.0	2.55	2.19			
40m	U	19.3	6.0	6.0	5.78	4.45	3.56	3.01	2.48				
	U	35.1	3.0	3.0	3.0	3.0	3.0	3.0	2.55				

机构 Mechanisms 6/8t

名称	6t		8t		容量量		电机功率	
	m/min	t	m/min	t	m	kW	kW	
起升 Hoisting	26LVF15	0-80	1.5	0-40	3.0	360	26	
		0-40	3.0	0-20	6.0			
	30LVF20	0-80	2.0	0-40	4.0	400	30	
		0-40	4.0	0-20	8.0			
变幅 Trolleying	6t	BP4030X	0-40 m/min				3.0	
	8t	BP4033X					3.3	
回转 Slewing	2RVF4		0-0.6 rpm				4.0×2	
电源 Power	380V (±10%) /50Hz		26LVF15: 37kW		30LVF20: 41.3kW			

平衡重 Counter weight

			PHZ3100	PHZ1860	PHZ1300
60m	13.978m	15060kG	3	1	3
55m	13.978m	13760kG	3	1	2
50m	13.978m	12460kG	3	1	1
45m	13.978m	10600kG	3	/	1
40m	13.978m	9300kG	3	/	/