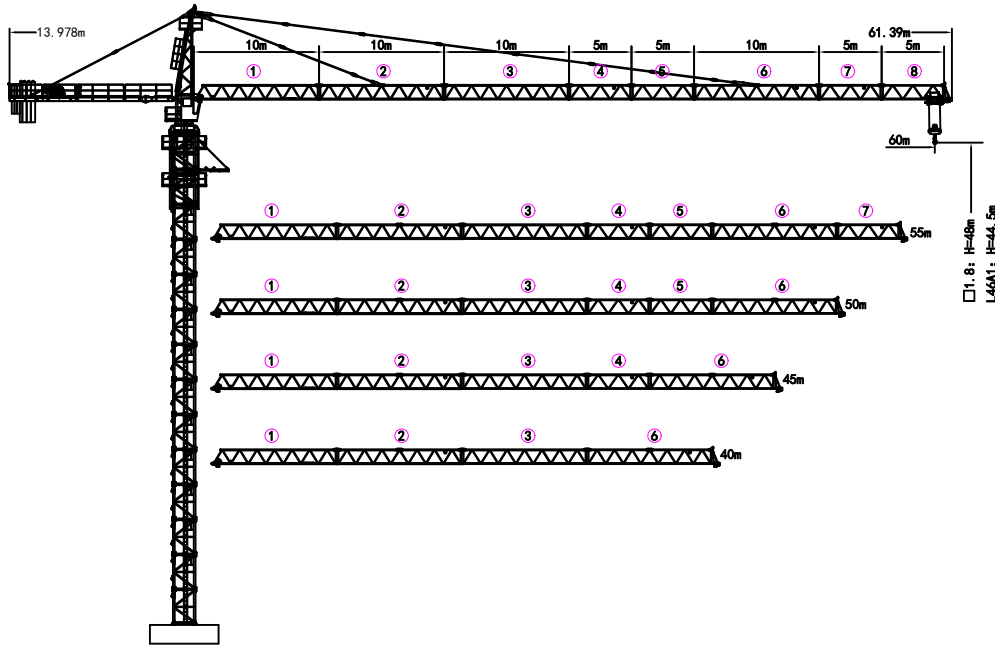
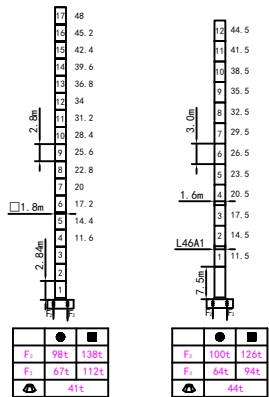


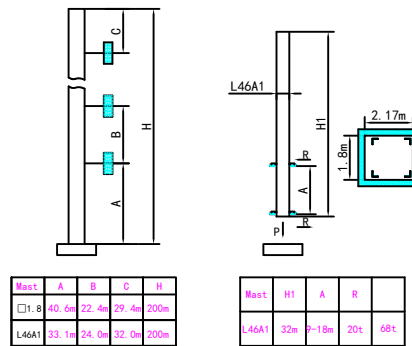
外形尺寸 Outline Dimensions



塔身截面 Masts



附着 Anchorages



● 工作状态支反力 in service Reaction ■ 非工作状态支反力 Out of service Reaction
 ⊕ 不含平衡重及压重时塔身立具重量 Total weight of free standing crane (exclude Counter weight & ballast)

附着道数: Number of tie collars=(H-A-C)/B+1

载荷特性表 Load Diagrams 10t

R(m)	Fall	R.C. _{max(m)}	C _{max(t)}	15	20	25	30	35	40	45	50	55	60
60m	U	13.0	10.0	8.53	6.09	4.66	3.72	3.05	2.56	2.17	1.87	1.62	1.41
	W	23.9	5.0	5.0	5.0	4.75	3.81	3.14	2.65	2.26	1.96	1.71	1.50
55m	U	14.0	10.0	9.27	6.64	5.09	4.08	3.36	2.82	2.41	2.08	1.81	
	W	25.7	5.0	5.0	5.0	4.15	3.45	2.91	2.50	2.17	1.90		
50m	U	14.6	10.0	9.72	6.97	5.36	4.30	3.55	2.99	2.55	2.21		
	W	26.8	5.0	5.0	5.0	4.39	3.64	3.08	2.64	2.30			
45m	U	14.6	10.0	9.72	6.97	5.36	4.30	3.55	2.99	2.55			
	W	26.8	5.0	5.0	5.0	4.39	3.64	3.08	2.64				
40m	U	14.6	10.0	9.72	6.97	5.36	4.30	3.55	2.99				
	W	26.8	5.0	5.0	5.0	4.39	3.64	3.08					

载荷特性表 Load Diagrams 8t

R(m)	Fall	R.C. _{max(m)}	C _{max(t)}	15	20	25	30	35	40	45	50	55	60
60m	U	15.4	8.0	8.0	5.93	4.56	3.64	3.0	2.52	2.15	1.85	1.61	1.41
	W	28.3	4.0	4.0	4.0	4.0	3.73	3.09	2.61	2.24	1.94	1.70	1.50
55m	U	16.7	8.0	8.0	6.50	5.01	4.01	3.32	2.80	2.4	2.07	1.81	
	W	30.6	4.0	4.0	4.0	4.0	4.0	3.4	2.88	2.48	2.16	1.90	
50m	U	17.4	8.0	8.0	6.85	5.29	4.25	3.52	2.97	2.55	2.21		
	W	32.1	4.0	4.0	4.0	4.0	4.0	3.60	3.06	2.64	2.30		
45m	U	17.4	8.0	8.0	6.85	5.29	4.25	3.52	2.97	2.55			
	W	32.1	4.0	4.0	4.0	4.0	4.0	3.60	3.06	2.64			
40m	U	17.4	8.0	8.0	6.85	5.29	4.25	3.52	2.97	2.55			
	W	32.1	4.0	4.0	4.0	4.0	4.0	3.60	3.06	2.64			

机构 Mechanisms 8/10t

名称	U		W		容绳量 m	电机功率 kW		
	m/min	t	m/min	t				
起升 Hoisting	8t	30LVF20	0-80	2.0	0-40	4.0	400	30
			0-40	4.0	0-20	8.0		
	10t	45LVF25	0-80	2.5	0-40	5.0	500	45
			0-40	5.0	0-20	10.0		
变幅 Trolleying	BP6055X		0-60 m/min			5.5		
回转 Stewing	2RVF4		0-0.6 rpm			4.0×2		
电源 Power	380V (±10%) /50Hz		30LVF20: 43.5kW		45LVF25: 58.5kW			

平衡重 Counter weight

			PHZ3380	PHZ2000	PHZ1300
60m	13.978m	16040kG	3	1	3
55m	13.978m	14740kG	3	1	2
50m	13.978m	13440kG	3	1	1
45m	13.978m	11440kG	3	/	1
40m	13.978m	10140kG	3	/	/